



# VSD LAB WEEK NEWSLETTER

April 20 - 26, 2025

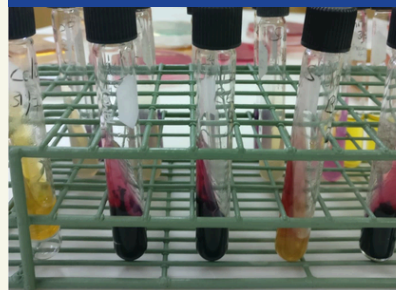
Ministry of Agriculture, Fisheries and Mining



## RESIDUE AND BIOCHEMICAL LABORATORY

The Residue and Biochemical Laboratory analyzes foods of animal origin for chemical, environmental and biological contaminants and veterinary drug residues:

- Pesticide Residue Analysis
- Trace Element Analysis
- Veterinary Drug Residues Analysis
- Marine Biotoxins Analysis
- Phytoplankton Analysis, among other tests



## LABORATORY PROFESSIONAL WEEK

Medical Laboratory Professional Week (MLPW) is an annual celebration of laboratory professionals and the vital role they play in the diagnosis, treatment and prevention of diseases.

It is being celebrated April 20 - 26, 2025 under the theme *Mystery Machine of Diagnostics: Another Case Solved by the Lab.*

The Veterinary Services Diagnostic Laboratory (VSDL) is the sole veterinary regulatory entity in Jamaica that provides testing services to the private and public sectors for animal health status and food safety related issues for import, domestic and exported foods of animal origin.

There are five laboratory units under the VSDL:

- Residue & Biochemical (ISO/IEC 17025:2017 accredited)
- Bacteriology (ISO/IEC 17025:2017 accredited)
- Serology
- Parasitology
- Molecular Biology (PCR)



## BACTERIOLOGY LABORATORY

The Bacteriology Laboratory routinely analyzes foods of animal origin for micro-organisms (zoonotic and foodborne pathogens):

- *E. coli* count
- *Salmonella* Detection
- *Listeria monocytogenes* and *Listeria* species Detection
- Commercial Sterility
- Aerobic, Coliform, Yeast and Mould Counts
- Potable Water Testing